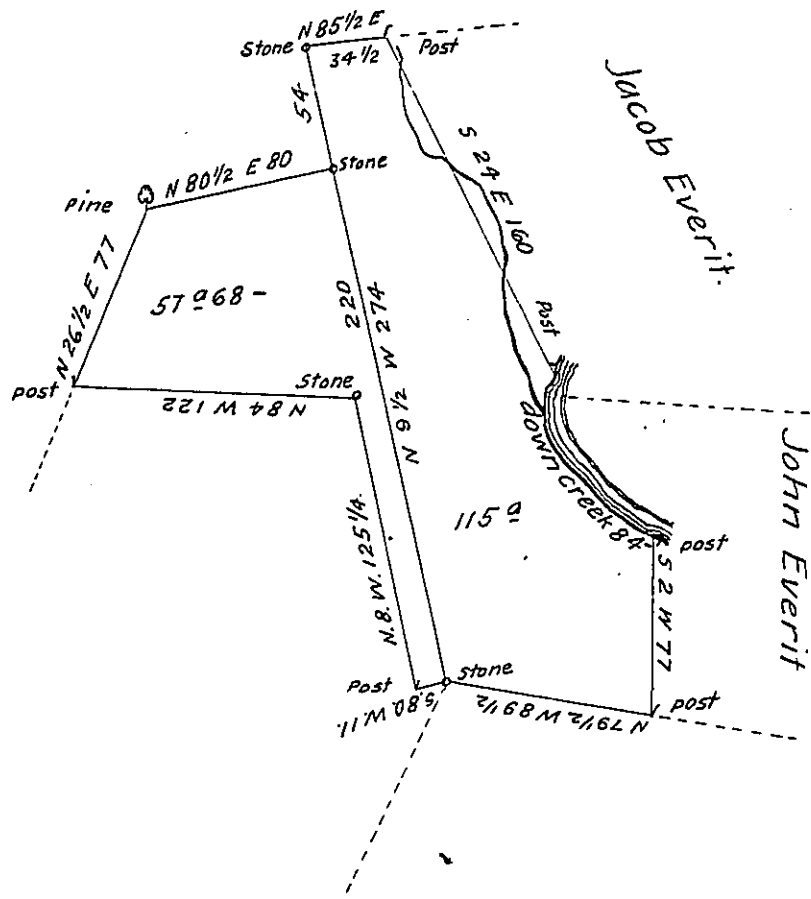


the Bearing & distance  
down Heads Creek

- 1. S 24 W 16
  - 2. S 29 E 22
  - 3. S 40 E 34
  - 4. S 60 E 12
- 84



A draft of a tract of land situate in Chesnut hill township  
Northampton County containing one hundred and seventy two acres  
sixty eight perches and allowance of six P. cent &c. The piece mark-  
ed 57<sup>a</sup> 68 ps. is a tract surveyed to Jacob Everitt Sen<sup>r</sup>. by warrant dated  
the 23<sup>d</sup> May 1786 the piece marked 115<sup>a</sup> is part of 372 acres surveyed  
to Jacob Weiss by warrant dated the 15<sup>th</sup> May 1750. Surveyed for Henry  
Everit the 8<sup>th</sup> May 1810. P-

Geo. Palmer D.S.

To Richard T. Leech, Esquire }  
Surveyor General }

IN TESTIMONY that the above is a copy of the original remaining on file in  
the Department of Internal Affairs of Pennsylvania, made  
conformably to an Act of Assembly approved the 16th day of  
February, 1833, I have hereunto set my Hand and caused  
the Seal of said Department to be affixed at Harrisburg,  
this .....twenty fifth..... day of .....October..... 1904

*Loose R. Brown*  
Secretary of Internal Affairs.